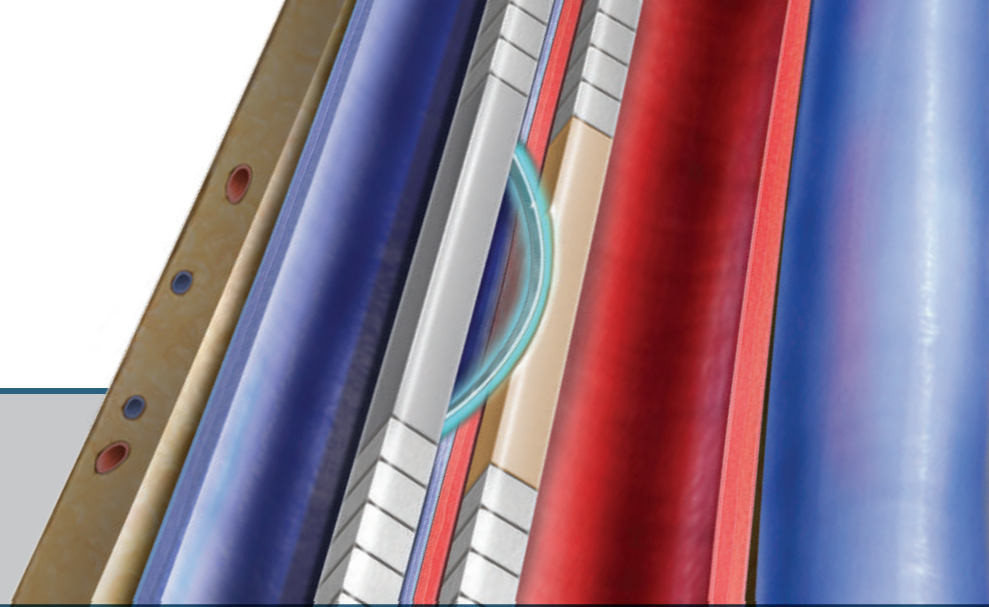


More AV Access Options For Your Dialysis

WAVELINQ™
EndoAVF System



Please consult product labels and instructions for use for indications, contraindications, hazards, warnings and precautions. The WAVELINQ™ EndoAVF System is intended for the cutting and coagulation of blood vessel tissue in the peripheral vasculature for the creation of an arteriovenous fistula used for hemodialysis.

© 2019 BD. BD, the BD logo, Bard, and Wavelinq are the property of Becton, Dickinson and Company. All other trademarks are property of their respective owners. Illustrations by Mike Austin. Copyright © 2019. All Rights Reserved. Bard Peripheral Vascular, Inc. 1 800 321 4254 | BD Switzerland Sarl, Terre Bonne Park – A4, Route De Crassier, 17, 1262 Eysins, Vaud, Switzerland. BD-33338 v1

